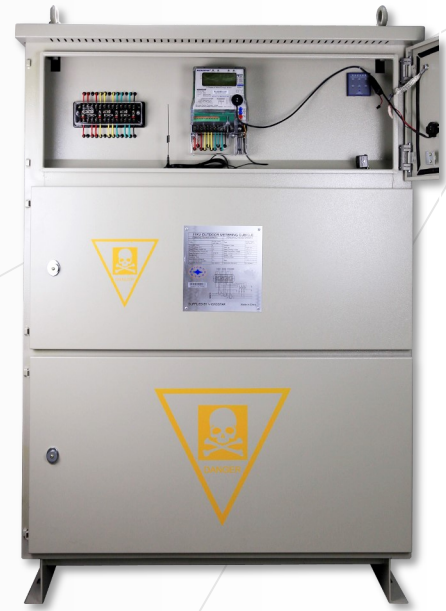


**MICROSTAR**

**MS600-11/33**

*11kV / 33kV Metering Panel*

**Integrated MV/HV Smart Metering Unit**



**FEATURES**

- High quality steel with sprayed plastic coating for durability
- Hinged lockable door with sealing provisions for access control
- Clear polycarbonate window with weatherproof rubber gasket lining
- Separate compartment for high accuracy CT/VT smart meters
- Fully assembled with CT, VT, meter and all accessories
- Two sets of heaters to prevent condensation caused by humidity
- Air vents for panel ventilation and rain shield to water drainage
- Cable entry & exit holes fitted with PVC cable glands
- Meter reading with push button or optical port without opening door

**TECHNICAL SPECIFICATIONS**

External Dimensions	1184mm x 1788mm x 760mm (11kV) 1714mm x 2465mm x 1155mm (33kV)
Temperature Range	-25 °C ~ +70 °C
Humidity Range	0 - 96%
Altitude Range	≤ 2,000 meters above sea level
Casing Material	Coated sheet steel
Window Material	High quality clear Polycarbonate
Window Dimension	90mm x 120mm
Voltage Rating	11kV, 33kV
Current Rating	100A / 200A / 300A / 500A / 600A / 800A

**MAIN COMPONENTS**

- 1x Microstar P2000-T Smart Meter Accuracy Class 0.2s/0.5s with built-in GPRS
- 3x 11kV/33kV Class 0.5 Current Transformers (CTs)
- 3x 11kV/33kV Class 0.5 Voltage Transformers (VTs)
- 1x Test Terminal Block with Transparent Cover
- 2x Air Heater, 1x Earthing Bar, 1x Protection Breaker

**APPLICATION**

- Power plant, transmission or distribution metering
- Outdoor all-in-one metering cabinet with High accuracy CTs and VTs
- GPRS-based AMR smart metering

**BENEFITS**

- High accuracy metering solution for power plant, transmission, substation or distribution
- Integrated solution with meter, CT/VTs, test terminals in one panel
- Suitable for outdoor installations with air vent and rain shield
- Supports smart meters with GPRS communication option and antenna
- High quality sheet steel with anti-corrosion coating for durability
- Clear polycarbonate window for visual reading and check
- Lockable doors with sealing provisions & warning signs

